

**SANY**

# TRAINING ALL NEW MATERIAL HANDLER 30TO

Product Management MPM  
Andreas Gruber



# GENERAL INFO SANY MATERIAL HANDLER

- General function
- Parts & Product designation



## Training Material Handler

### Parts of a material handling machine

1. Front axle (steering axle / full floating)
2. Rear axle (fixed axle)
3. Transfer gear
4. 4-point stabilizers
5. Counterweight
6. Boom cylinder
7. Height-adjustable cab
8. Lift frame
9. Box-type boom
10. Stick cylinder
11. Dipperstick
12. Multi-tine-grab



Training Material Handler

Sany material handler product designation

# SMHW30G5

**SANY**

Material

Handler

Wheeled

30 Tons

Generation „5“



# EQUIPMENT

- Premium Components
- Undercarriage
- Display
- Powerhouse
- Components



## COMPONENTS

# VALUED COMPONENTS

- Hydraulic pumps and valves: KAWASAKI
- Engine and aftertreatment system: CUMMINS
- Gearbox: DANA
- Axles: KESSLER

Strong steel work is made in-house,  
key components origin from high-value suppliers



# STABLE AS ROCK

- 2-wheel steering
- Joystick steering
- Reinforced distribution slewing
- 4 point outriggers
- Kessler HD Axles
- 8-ply Solid rubber tires



- + Central crease nipple (USP)
- + Full-foldable outrigger-plates
- + Clean undercarriage design

# DISPLAY

## DASHBOARD

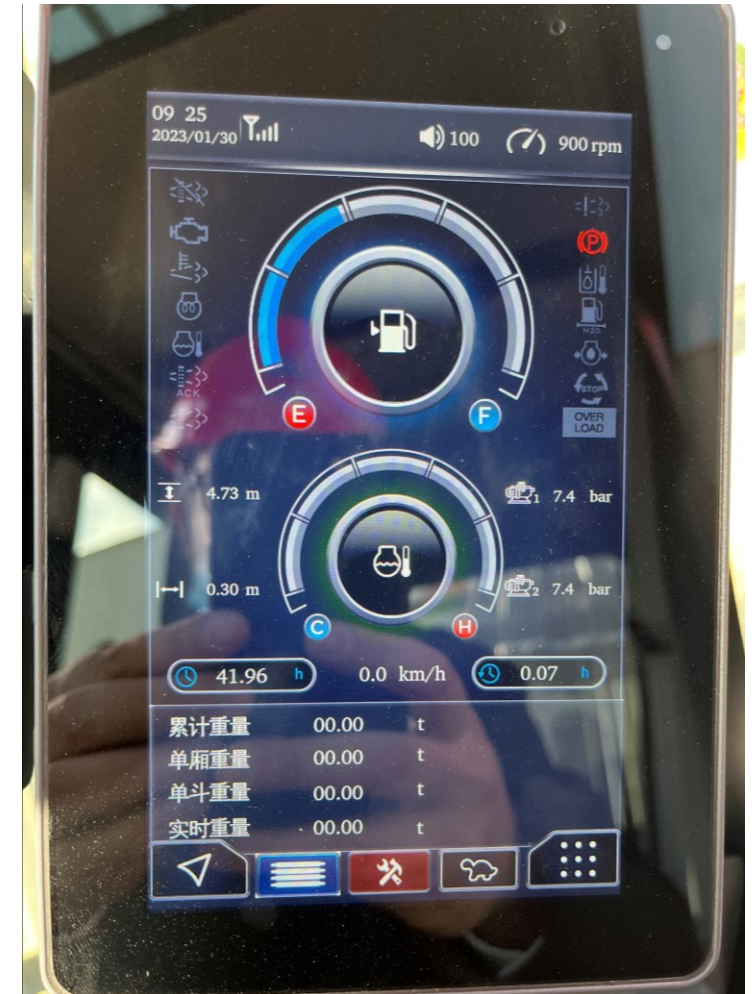
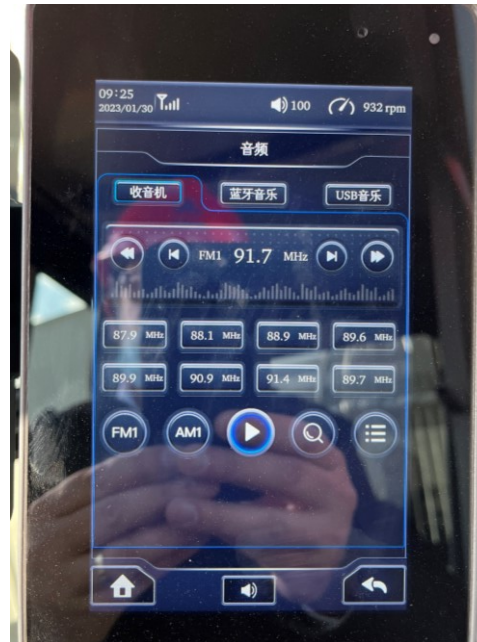
- Info about the health of your machine

## INFORMATIONS

- Via the touch-screen you can surf in the menue
- Height limiter for inside buildings standard
- Radio, MP3 and bluetooth ready

## CAMERA

- Right hand side and rear camera standard





POWERHOUSE

# POWERHOUSE

## ENGINE

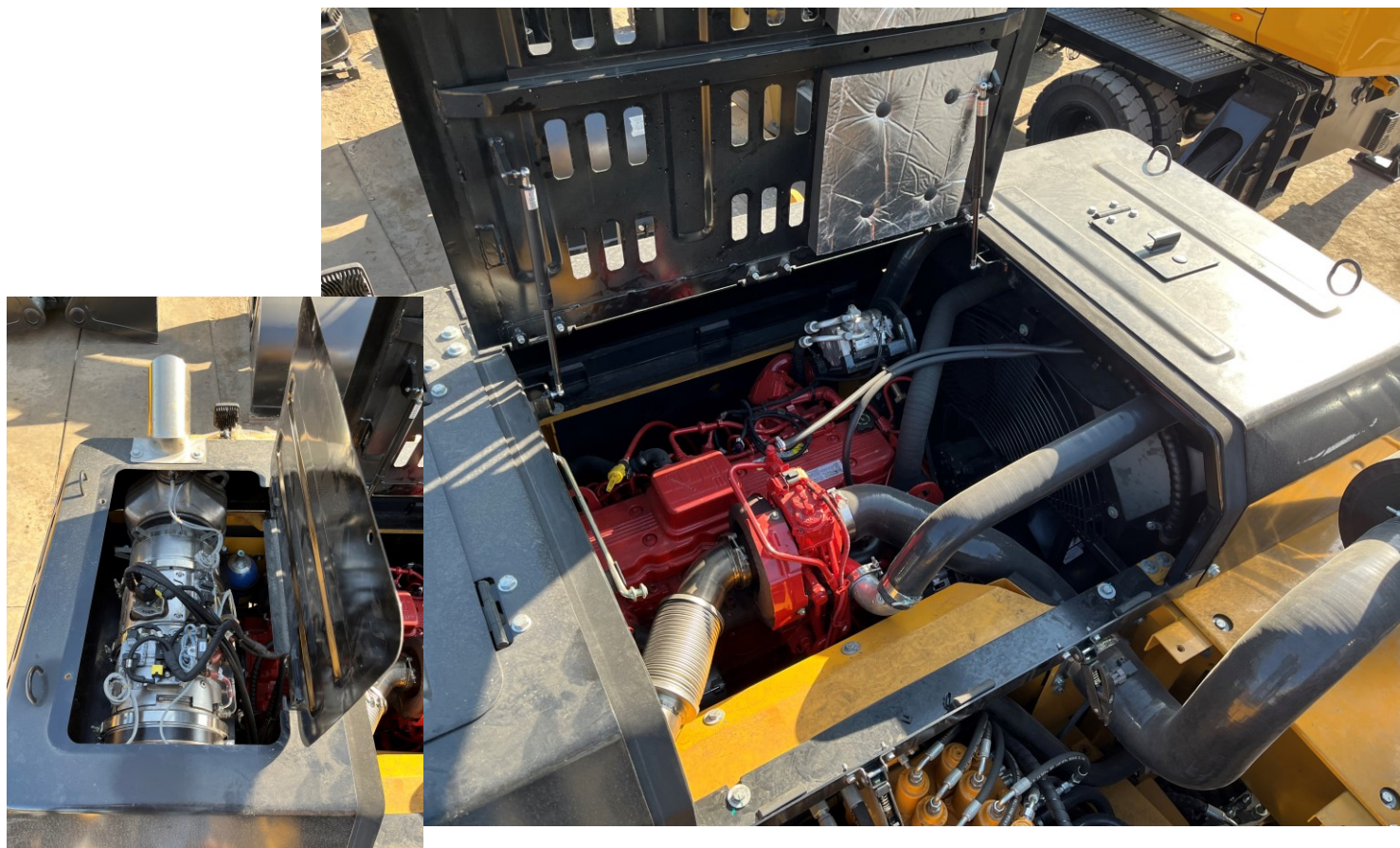
- Cummins 6.7 / 140kW

## AIR COOLED

- Reversing Air cooler for higher availability

## KEEP GOING

- 50l DEF and 465l Diesel



## COMPONENTS

# COMPONENTS

## HEARTBEAT

- Double pump for more action simultaneously

## ACCESS

- Great access to daily maintenance

## REVERSING

- Reversing fan for water, air and intercharge



## ATTACHMENT

# ATTACHMENT

## EXAMPLE SCRAP-GRAB WITH HALFCLOSED SHELLS

- Integrated safety of the cylinders
- Perfect tool for handling scrap

## HIGH

- High closing forces

## REINFORCED

- Reinforced tines for maximum reliability



# INFO RANGE- AND LIFTCHART

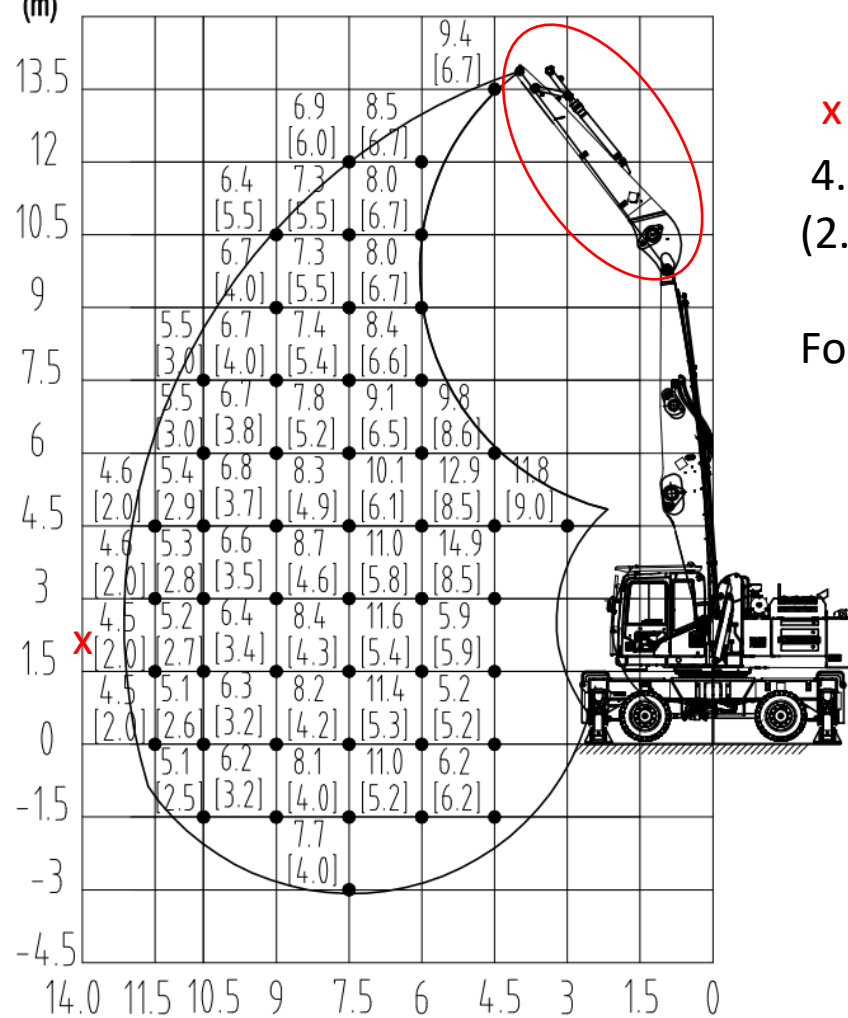
- Range diagramm SMHW30G5 12,5m multi purpose stick
- Range diagramm SMHW30G5 12,0m loading equipment
- Range diagramm SMHW30G5 14,0m loading equipment



## Training Material Handler

### Liftchart – 12m Multi purpose

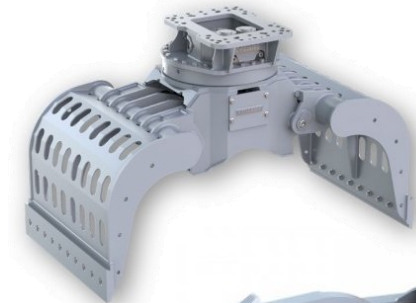
Loading Table of Material Handling Machine SMHW30  
(Boom 7.3m Stick 5.1m unit:t)



x

4.5 = 4,5t @ 4-point support  
(2.0) = 2,0t @ tires

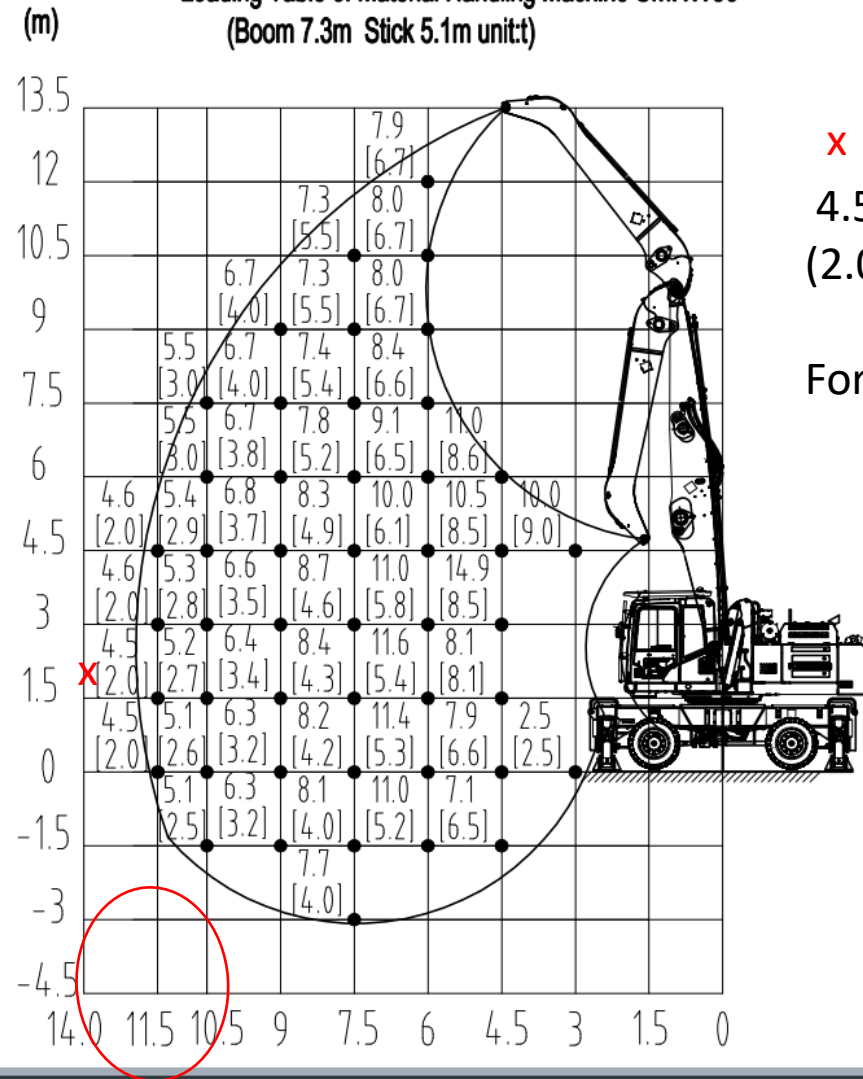
For fixed attachments like recycling



## Training Material Handler

### Liftchart – 12m Standard

Loading Table of Material Handling Machine SMHW30  
(Boom 7.3m Stick 5.1m unit:t)



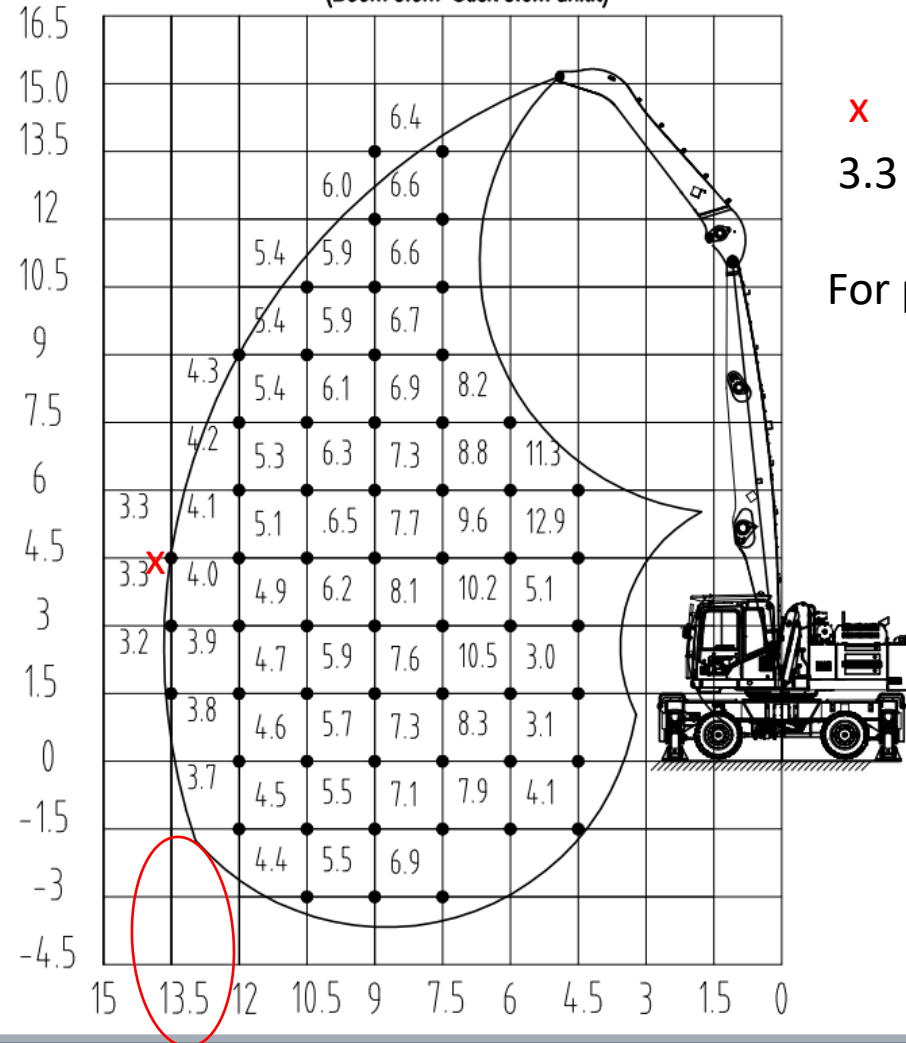
x  
4.5 = 4,5t @ 4-point support  
(2.0) = 2,0t @ tires

For pendulum attachments like scrap



### Liftchart – 14m Option

Loading Table of Material Handling Machine SMHW30  
(Boom 8.6m Stick 5.6m unit:t)



x  
3.3 = 3,3t @ 4-point support  
For pendulum attachments like scrap

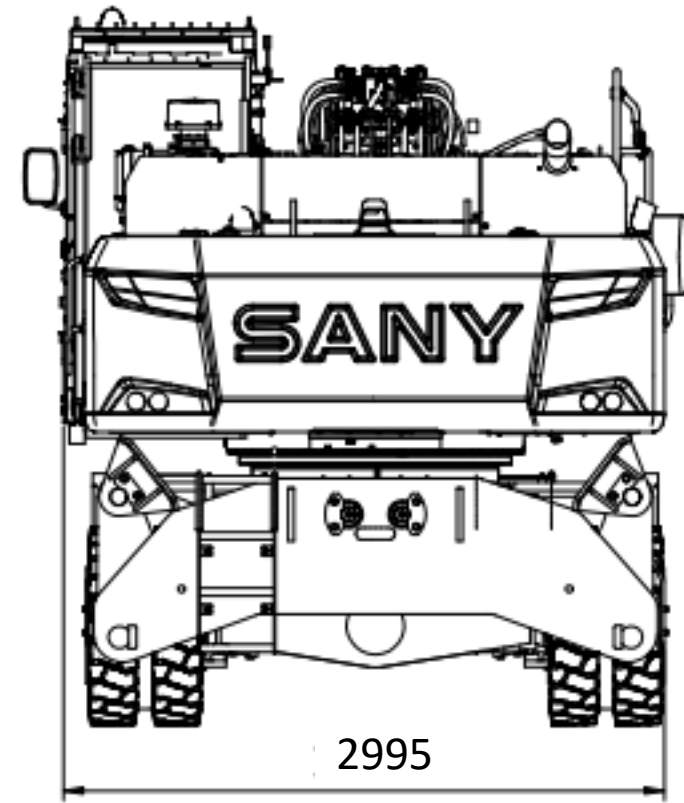


## Training Material Handler

### Technical data

Sany	model
	weight
Engine	model
	horsepower
	Displacement
	emissions Stage
	Fuel tank
Hydraulic System	DEF tank
	Pump capacity
	Working pressure
Slewing Drive	hydraulic tank
	swing speed
Complete Machine	swing torque
	Noise inside cab
Cabin	Surround Noise
	cab elevation
Undercarriage	tires
	travel speed- joystick steering
Boom	Standard
	Option
	Option

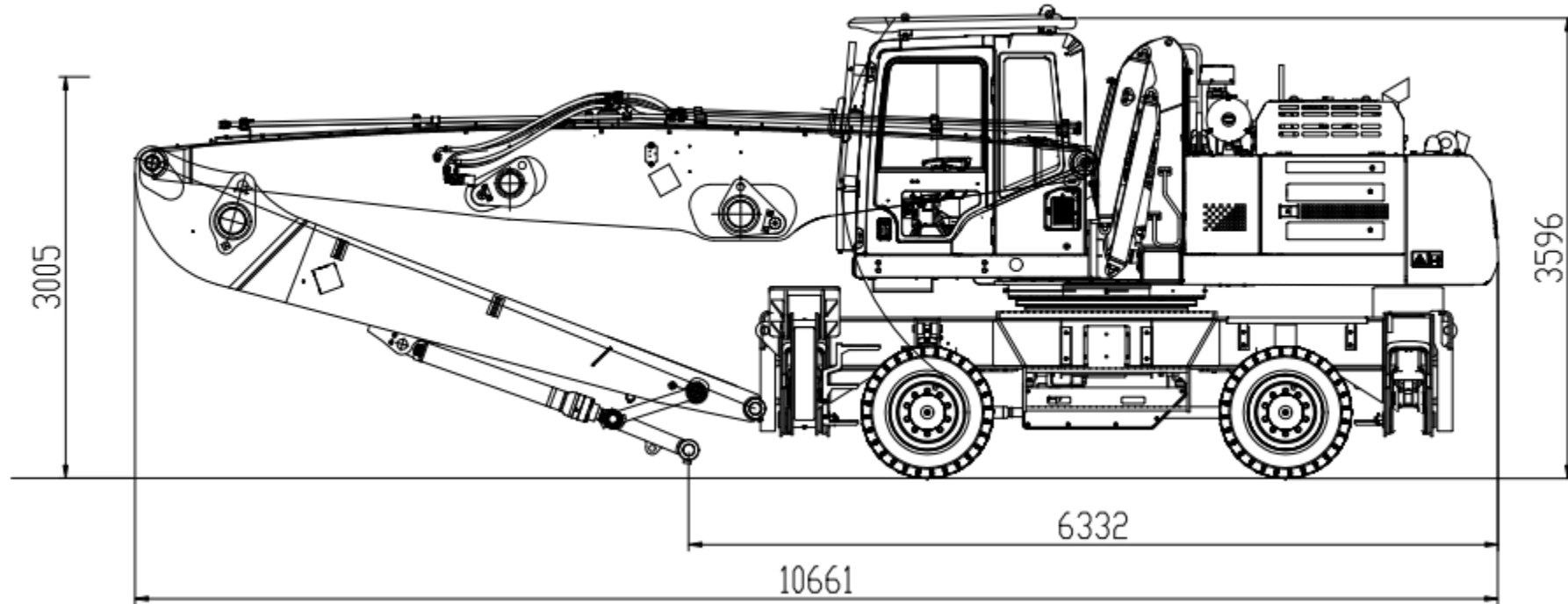
**SMHW30G5**  
**≤30T**  
**Cummins 6.7**  
**140kw @ 2000RPM**  
**6.7L**  
**Stage V**  
  
**465L**  
**50L**  
**2×250 l/min**  
**320 bar**  
**230L**  
**0-8 rpm variable**  
**71 kNm**  
**< 70 db(A)**  
**< 98 db(A)**  
**2,65m**  
**solid -rubber 10.00-20 8fold**  
**0-7 km/h Level I**  
**0-20 km/h Level II**  
**12m**  
**14m**  
**3rd cylinder**





**Dimensions (12m multi purpose loading equipment)**

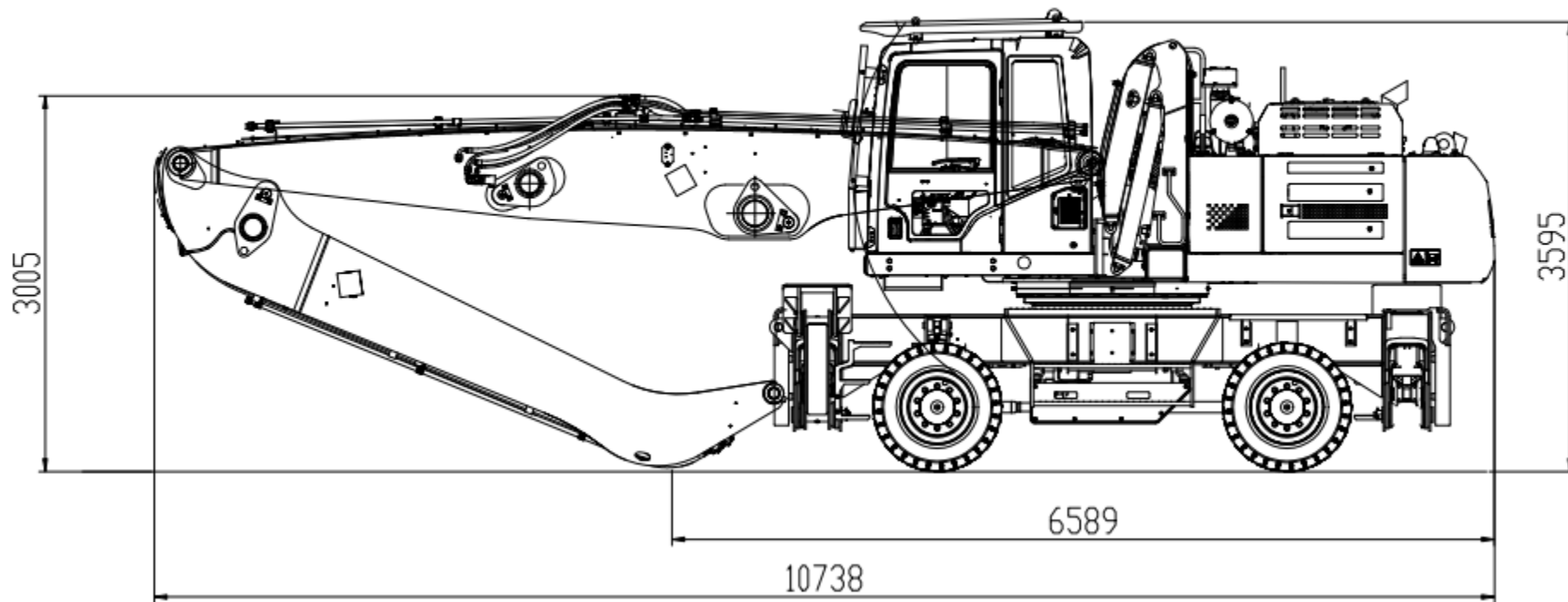
12m Multi purpose stick(Boom 7.3m Stick 5.1m)transport dimension

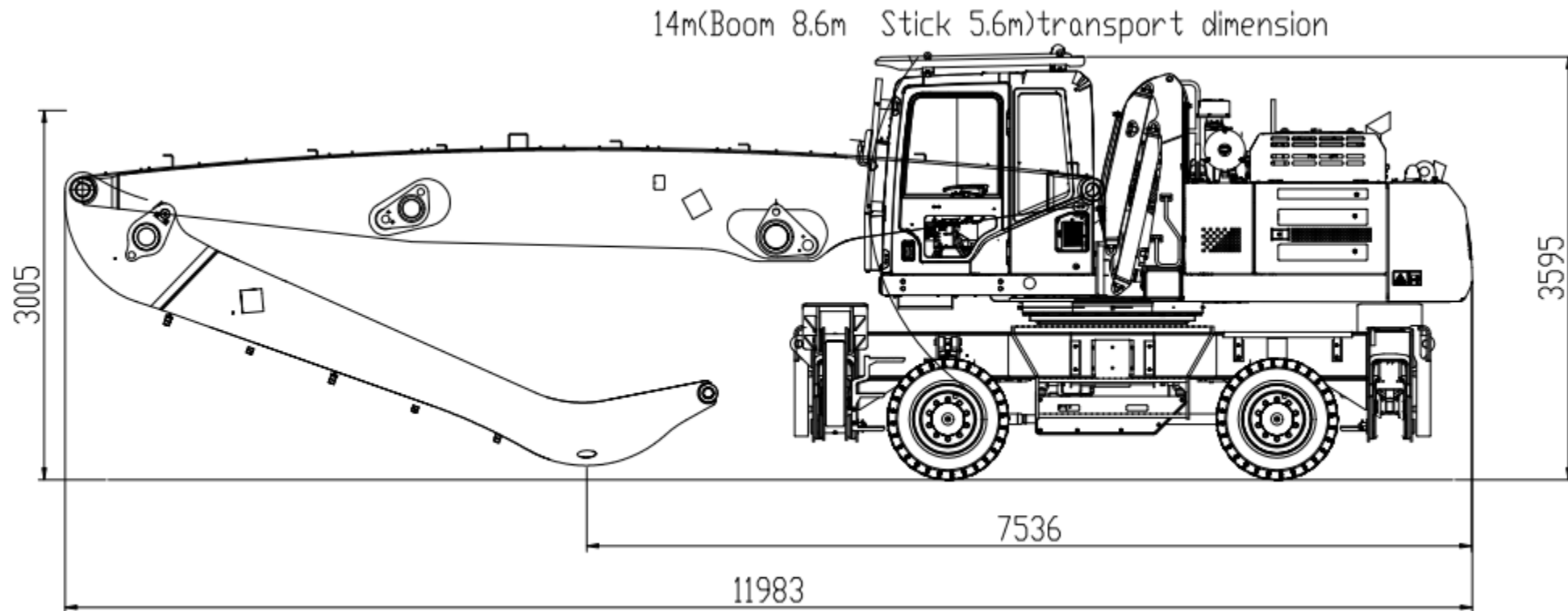


# Training Material Handler

## Dimensions (12m loading equipment)

12m(Boom 7.3m Stick 5.1m)transport dimension



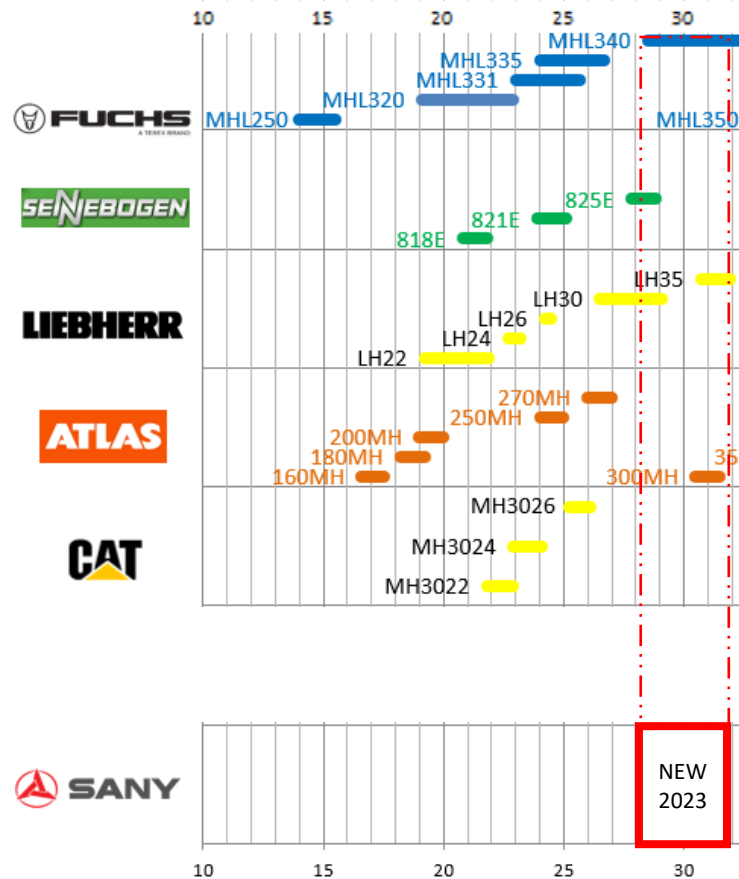
**Dimensions (14m loading equipment)**

# COMPETITOR COMPARISON

Competitive comparisons		Fuchs MHL340F	Sennebogen 825E	Liebherr LH30	CAT MH3026	SANY SMHW30G5
Product attributes						
Rated power	kw	128	129	140	129	140
Engine	x cylinder	Deutz TC6.1 6	Cummins 6.7 6	Liebherr D934 4	Cat 7.1 6	Cummins 6.7 6
Max. operational weight	to m	28,5	410	2x231	29	29-30
Max. reach	m	13,7	310	430	13	14
Mainpump capacity	l/min	2x330	350	350	209	2x250
Hydraulic tank capacity	bar	372	2,8	3,4	3,2	230
Working pressure	to	320	5,7	5,4	5,6	320
Max. lift capacity @ 12m	m	3,4	450	330	416	4,1
Max. viewing height	l	5,6	0-6	0-8	0-8	5,6
Fuel tank capacity	rpm	337	1030%	1020%	1035%	465
Max. slewing speed		0-7				0-8
TOTAL		3	4	2	5	1
RANKING		BENCHMARK		BENCHMARK		NEWCOMER
COMMENT						

## Training Material Handler

### Competitive Landscape 15-30t



#### SANY SMWH30G5

- 1 Fuchs MHL340
- 2 Sennebogen 825
- 3 Liebherr LH30
- 4 CAT MH3026
- 5 Atlas 300MH

## Outlook “new” 30 ton material handler – technical data

Competitive comparisons		Fuchs		Sennebogen		Liebherr		CAT		SANY	
		MHL340F		825E		LH30		MH3026		SMHW30G5	
<b>Product attributes</b>											
Rated power	kw	128	85%	129	90%	140	100%	129	90%	140	100%
Engine	x	Deutz TC6.1		Cummins 6.7		Liebherr D934		Cat 7.1		Cummins 6.7	
type	cylinder	6	100%	6	100%	4	80%	6	100%	6	100%
Max. operational weight	to	28,5	90%	29	100%	29	100%	29	100%	29-30	100%
Max. reach	m	13,7	90%	14	100%	14	100%	13	85%	14	100%
Mainpump capacity	l/min	2x330	100%	410	80%	2x231	95%	380	75%	2x250	95%
Hydraulic tank capacity	l	372	95%	310	95%	430	100%	209	85%	230	90%
Working pressure	bar	320	100%	350	90%	350	90%	370	85%	320	100%
Max. lift capacity @ 12m r	to	3,4	90%	2,8	80%	3,4	90%	3,2	85%	4,1	100%
Max. viewing height	m	5,6	100%	5,7	100%	5,4	100%	5,6	100%	5,6	100%
Fuel tank capacity	l	337	85%	450	95%	330	80%	416	90%	465	100%
Max. slewing speed	rpm	0-7	95%	0-6	90%	0-8	100%	0-8	100%	0-8	100%
TOTAL			1030%		1020%		1035%		995%		1085%
RANKING		3		4		2		5		1	
COMMENT		BENCHMARK				BENCHMARK				NEWCOMER	

## SANY SMHW30G5 VS Liebherr LH30

COMPETITOR	SANY	LIEBHERR	
Rated Power	145 kW	140 KW	5 kW more
Engine	Cummins 6.7	Liebherr D934	
Type	6 cylinder	4 cylinder	2 cylinder more
Min. OP weight	28.900 KG	26.500 KG	2.400 KG heavier
Max. OP weight	30.460 KG	29.100 KG	1.360 KG heavier
Max. reach	14m	14m	
Main Pump	Kawasaki	Liebherr	
Hydraulic tank cap.	230l	430l	200l less
Working pressure	320bar	350bar	30bar less
Max. Lift capacity	4,5t	2,8t	1,7t more capacity
Viewing height	5,6m	5,4m	200mm higher
Length Undercarriage	5300mm	5180mm	120mm longer
Cooling circuits	3	2	1 circuit more
Swing tail radi	3,0m	2,9m	100mm more swing tail
Fuel tank cap.	465l	330l	135l more capacity
Axle width	2800mm	2800mm	
Slewing speed	0-8	0-9	
Ground clearance	340mm	353mm	
Transport height	3500mm	3380mm	
Transport width	2995mm	2990mm	
Transport length	10800mm	11250mm	

# THANK'S FOR YOUR ATTENTION

**ANDREAS GRUBER**

PRODUCT MANAGER MPM

ANDREAS.GRUBER@SANYEUROPE.COM

PHONE +49 171 921 72 37

